

The Porterdale Mill Loft Development is a creative dynamic addition to Newton County. The development is an adaptive new use of the Textile Mill and Cotton Warehouse facility built over a century ago in Porterdale Georgia. Listed on the National Register of Historic Spaces, these buildings have been meticulously restored in compliance with the historic renovation standards of the Department of the Interior.

The Porterdale Mill Loft Development has 154 loft-style apartment units, two Restaurant spaces, seven Retail spaces, and several Live / Work spaces that can be utilized for commercial use.

The Porterdale Mill Loft Development represents a new type of mixed-use community for those who desire or appreciate a unique planned community. The retail spaces offer unparalleled visibility, access and ample free parking. The large Restaurant Space is located on the main floor of the Mill Building with a beautiful patio overlooking the Yellow River. The Restaurant Space has exposed beams, high ceilings, and has been built out with improved accommodations for a restaurant such as a 600 amp electric panel and 3000 gallon grease trap.

Call now to be part of a dynamic change to this beautiful setting!

**PORTERDALE MILL LOFTS –
A HISTORIC BUILDING, A NEW LIFE.
BE PART OF SOMETHING SPECIAL!**



A NEW KIND OF NEIGHBORHOOD.

LEASING INFORMATION

WALTER DAVIS - DAVIS ASSOCIATES
1001 PIEDMONT AVENUE, SUITE 201
ATLANTA, GEORGIA 30309

P (404) 874-6688 F (404) 874-2179

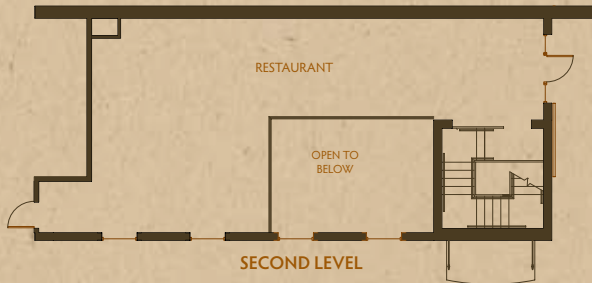
Please call (404) 874-6688 or visit
www.porterdalemill.com/retail
for current availability



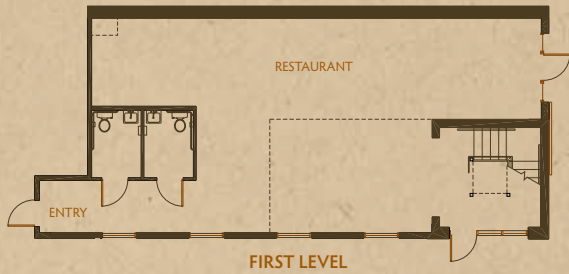
WWW.PORTERDALEMILL.COM

COTTON WAREHOUSE

RETAIL • RESTAURANT • LIVE/WORK



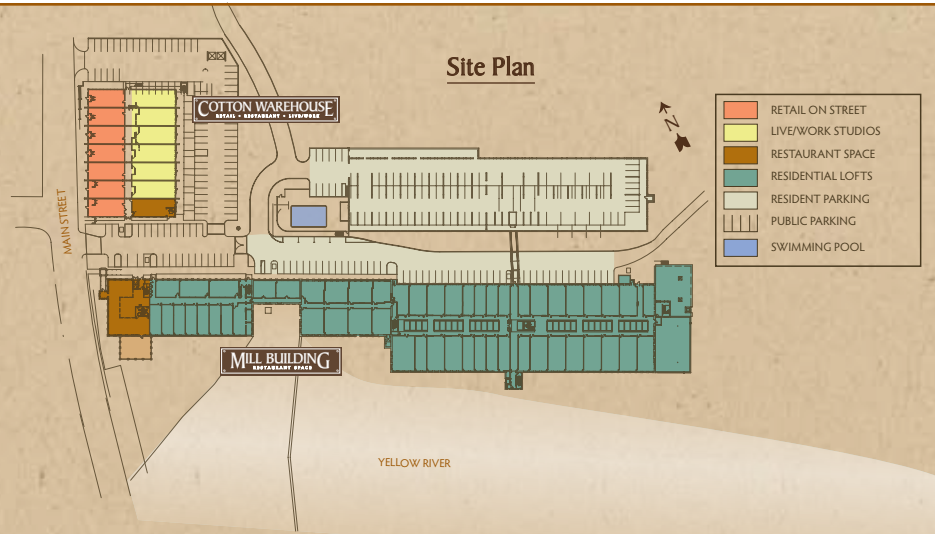
Cotton Warehouse Restaurant / Pub Space
2,262 sq ft



Retail Space Along Street
1,275 sq ft



Live / Work Space
1,489 sq ft



MILL BUILDING

RESTAURANT SPACE

Mill Building Restaurant Space with Patio overlooking Yellow River
4,406 sq ft

